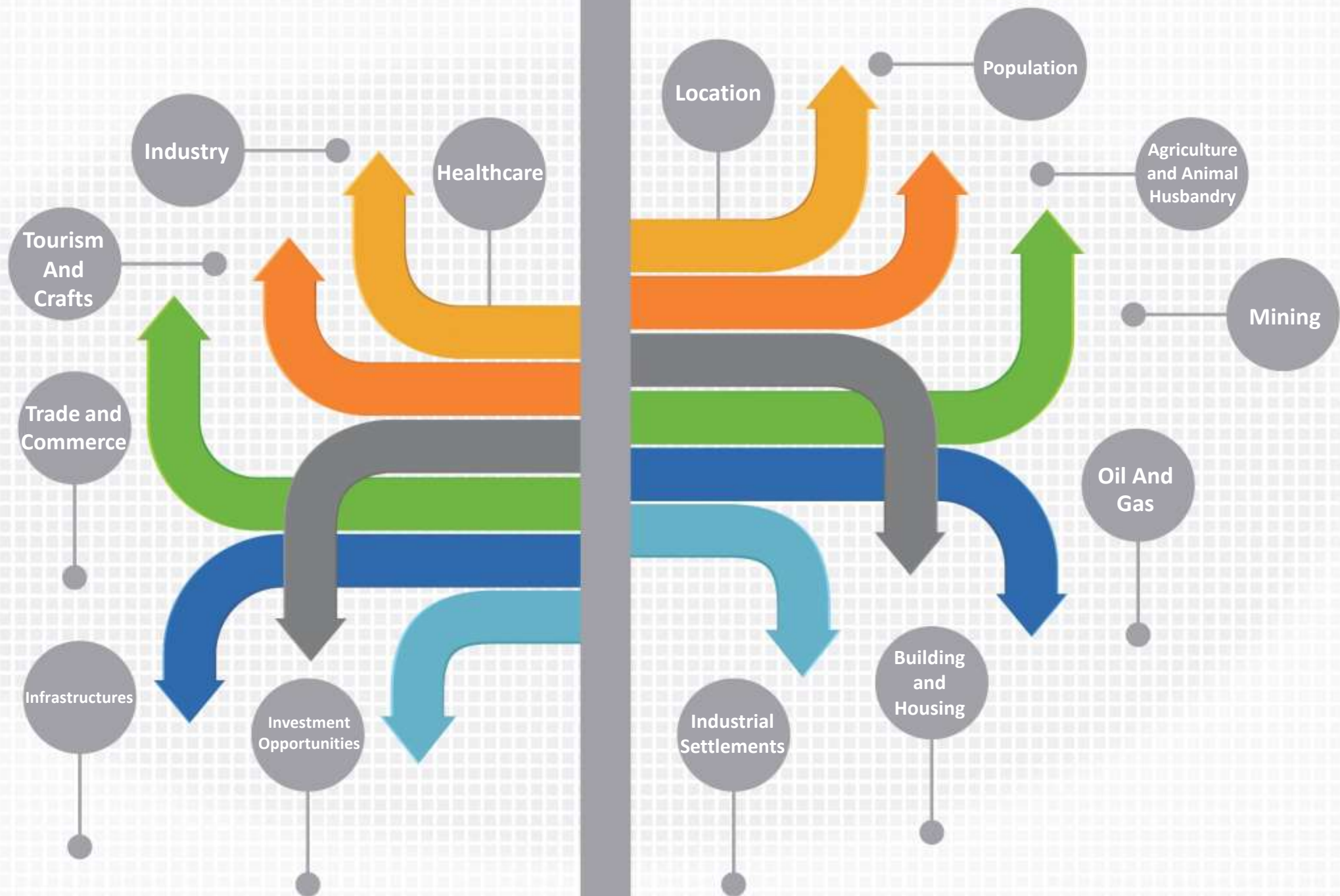




*Kermanshah Chamber Of Commerce,  
Industries , Mines & Agriculture*

# **Kermanshah** **The Land of Golden** **Opportunities**







# Location of Kermanshah Province

[Return to Main Menu](#)





371 kilometer  
joint border  
with Iraq



In the main route of transit of  
goods and services to Iraq and  
in the main route of Atabat Aliat  
(Karbala and Najaf Ashraf)



Kermanshah province is located in the  
mountainous region with an area of 25045  
square kilometer in the west of the Iran



It has  
14 towns  
34 cities  
32 districts  
87 rural districts  
2617 villages



14 towns of  
Kermanshah  
province  
respectively area



[Return to Main Menu](#)

# Population



The infographic features a central white circle with the word 'Population' in bold black text. A curved line with five colored dots (orange, red, purple, dark purple, and dark blue) connects this central circle to five corresponding colored circular icons below. Each icon contains a different symbol: a pie chart, a bar chart, a person silhouette, a line graph with an upward arrow, and a gear. The background is a light gray world map. A 'Return to Main Menu' button is located in the bottom left corner.

[Return to Main Menu](#)



43.7%  
of the  
population  
of  
Kermanshah  
province  
are **active**



More than 65 years old

7.1%

From 15 to 64 years old

70.7%

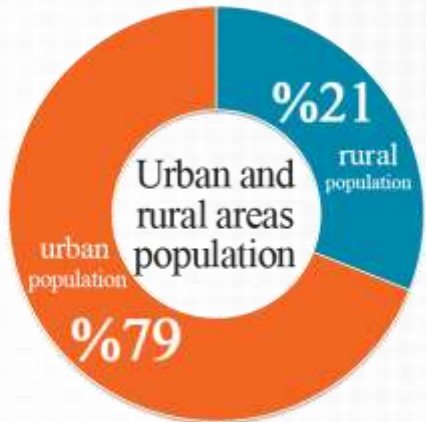
Less than 15 years old

22.2%

1/99

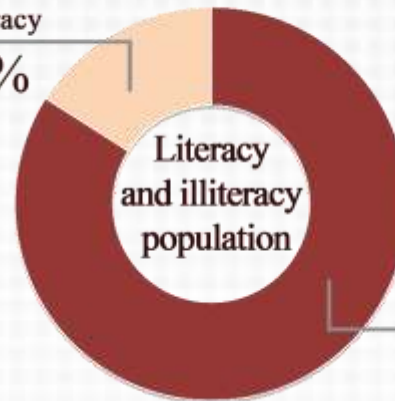
million

Total  
population of  
Kermanshah  
province



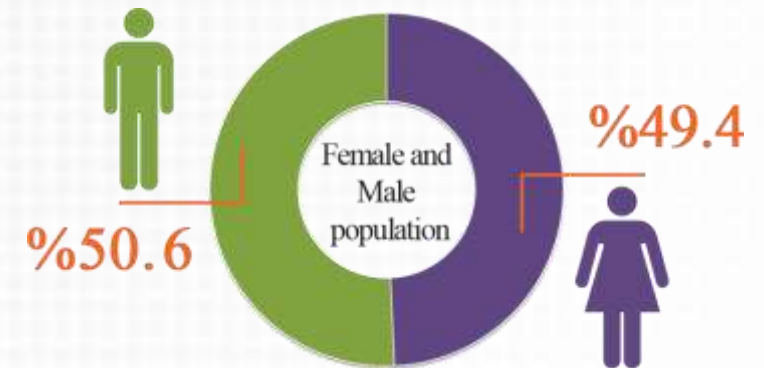
Illiteracy

16%

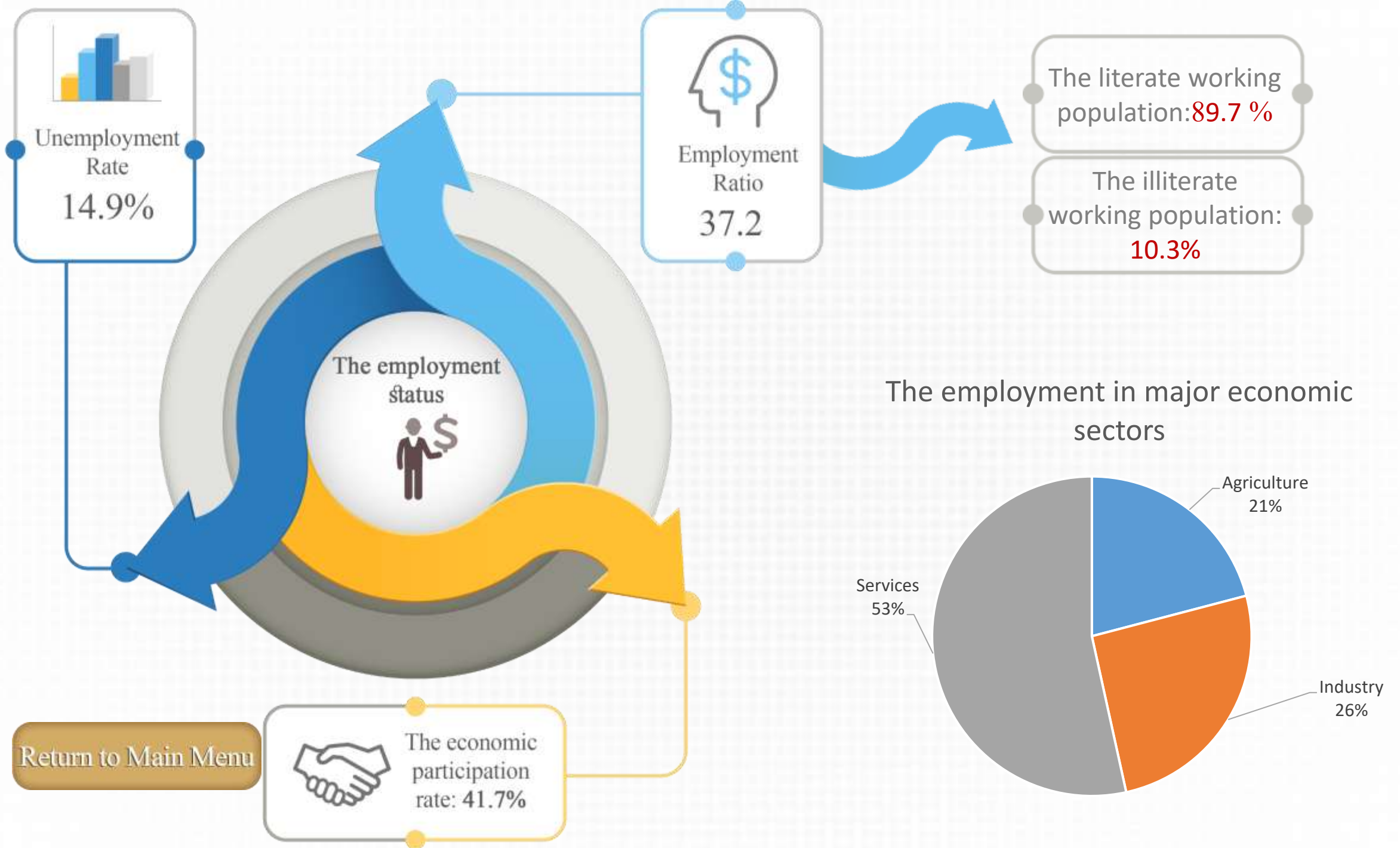


Literacy


84%



[Return to Main Menu](#)



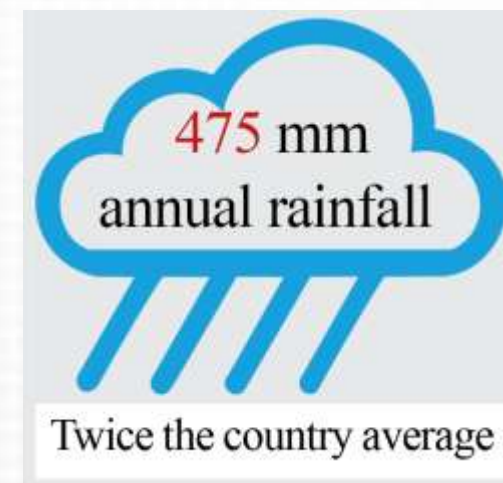
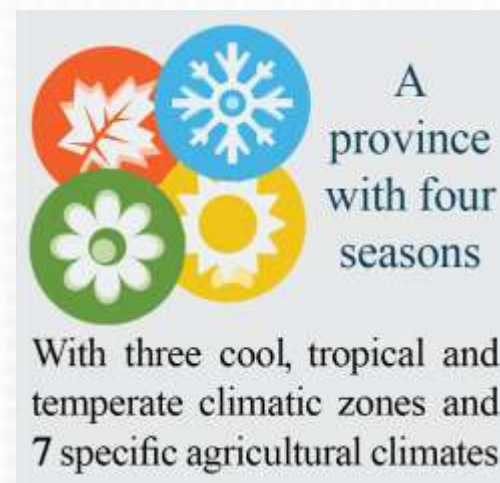
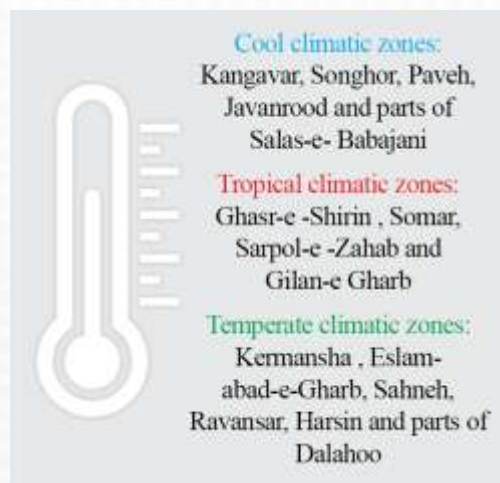
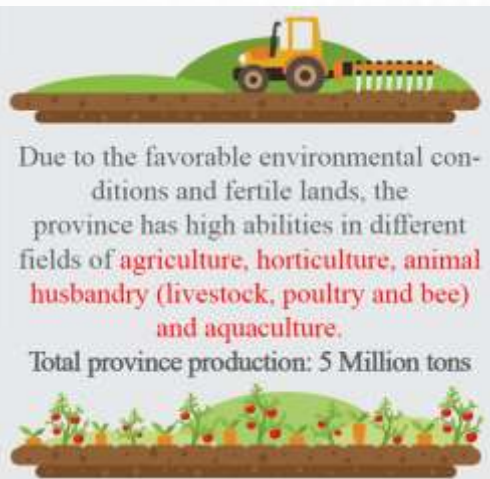




# Agriculture and Animal husbandry

[Return to Main Menu](#)





**208** species of medicinal plants



**79%** of agricultural lands, is dry land



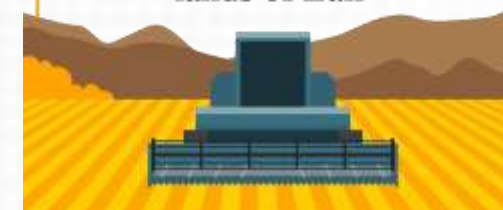
**4.55%** Garden And Land



**95%** Farmland

**960** thousands hectares Kermanshah Agricultural Land Level

**5%** of total agricultural lands of Iran



[Return to Main Menu](#)



Grain storage capacity  
of **53** silos is  
**1,500,000**  
tons



*Food storage  
capacity  
(cold storage)*



**75000** tons



**Paveh  
Organic Town**

[Return to Main Menu](#)

Suger beet, wheat, barley, beans, nucleated  
fruits and animal husbandry

Islamabad  
-e  
Gharb

Corn, beans, vegetable and fruits (tomato, cucumber and  
potato) nucleated fruits and animal husbandry

Sarpol-e  
Zahab

Vegetable and fruits, citrus and fisheries

Ghasr-e  
Shirin

Nucleated, grainy and dried fruits and animal  
husbandry

Javanrood

Grainy and dried fruits, pomegranate and  
fishery

Paveh

wheat, oil seeds, barley, forage, vegetables,  
nucleated, grainy and dried fruits, medicinal  
plants, fishery and animal husbandry

Kangavar

Wheat, grainy and dried fruits (apple) and  
animal husbandry

Salas-e  
Babajani

Every  
city's  
major  
products

Kermanshah

Wheat, corn, barley, sugar beets, beans, nucleated fruits,  
grainy fruits, vegetable and fruits, animal husbandry  
and beekeeping

Dalahoo

wheat, beans, nucleated and grainy fruits, animal  
husbandry and fishery

Gilan-e  
Gharb

wheat, forage, animal husbandry and grainy  
fruits

Songhor

wheat, sunflower, beans, forage, nucleated and  
grainy fruits and animal husbandry

Ravansar

wheat, corn, rapeseeds, barley, grainy fruits, vegetable  
and fruits and animal husbandry

Sahneh

sugar beets, barley, vegetable and fruits, nucleated and  
grainy fruits, dried fruits, medicinal plants, animal  
husbandry and beekeeping

Harseen

wheat, corn, sugar beet, forage, beans, vegetable and  
fruits (potatoes and onions), nucleated, grainy and  
dried fruits, medicinal plants, animal husbandry and



**1** The first place, in terms of the level and production of chickpeas, in the country



**1** The first place, in terms of the level and production of barley, in the country



**3** The second place, in terms of the level and production of corn, in the country



**4** The fourth place, in terms of the level and production of sugar beet, in the country



**4** The fourth place, in terms of the level and production of rapeseed, in the country



**4** The fourth place, in terms of the level and production of wheat, in the country



**1** Ranked the first in the country, in terms of performance in sugar beet and corn units



Production of 21,000 tons of aquatics per year

Paveh pomegranate  
Dalahoo fig and olive

Production of more than 340 thousand Tones kind of fruits (apple, cherry, wal-nuts,...)

Production of 3.8 Million Tones of wheat, barley, peas, corn, sugar beet, rapeseed and sunflower (Songhori Seeds)



Sanjabi race ship, Kord race horses, industrial dairy units

(production approtinately 532 thousand Tones.)

Existence of large factories of an iterant industries:

Rojin Tak Company (tomato paste production), Nazgol Company (oiling the oil seeds), corn cultivation development company (corn hybrid seed production), disinfecting units for wheat and barley seeds, production units of livestock and poultry feed, poultry slaughterhouse units, corn drying units and ...

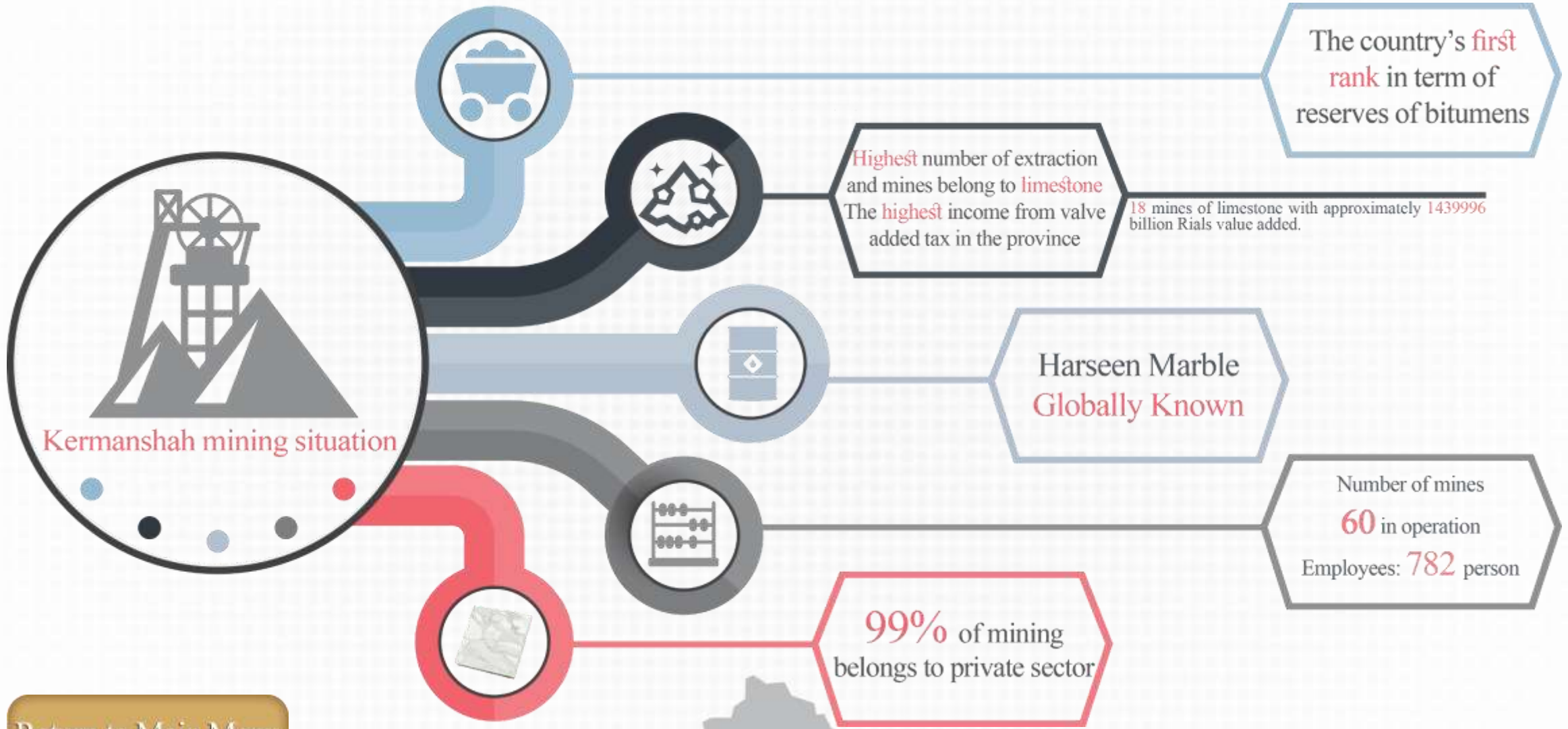
Return to Main Menu



# Mining

[Return to Main Menu](#)





## Quantity and value of mineral productions of mines in operation by activity

Mine name	Production amount (thousand tons)	Production value (million Rials)
Sand and ballast extraction	256000	36740
Extraction of decorative stones	201550	234075
Extraction of carcass (offal) stones	481000	67660
Extraction of ballast stone	20000	6000
Extraction of limestone	3853628	1530642
Extraction of gypsum	156850	20591
Extraction of red and yellow soil	6000	3600
Extraction of natural solid bitumen	0	0
Extraction of silica	27930	195335

The total amount of mineral productions in the mines in operation is **5023958 thousand tons** with a production value of **2113782 million rials**

[Return to Main Menu](#)

specification of mines in the province

01

.....● **5 million tons** Amount of production (**2113782 Billion Rials**)

02

.....● Value added **1900505 Billion Rials**. Investment value **77212 Billion Rials**

03

.....● The number of employees is **782 individuals**  
**59 mines** are managed by the private sector  
**One mine** is managed by the public sector

Total number of mines in operation is **60**.  
(**50** hypaethral mines and **10** underground and hypaethral extraction mines)

Other mineral extraction **10**

- Bitumen solid 8
- Silica 2

Mineral and Chemical extraction **1**

- Yellow and soil red 1

Stone sand extraction **49**

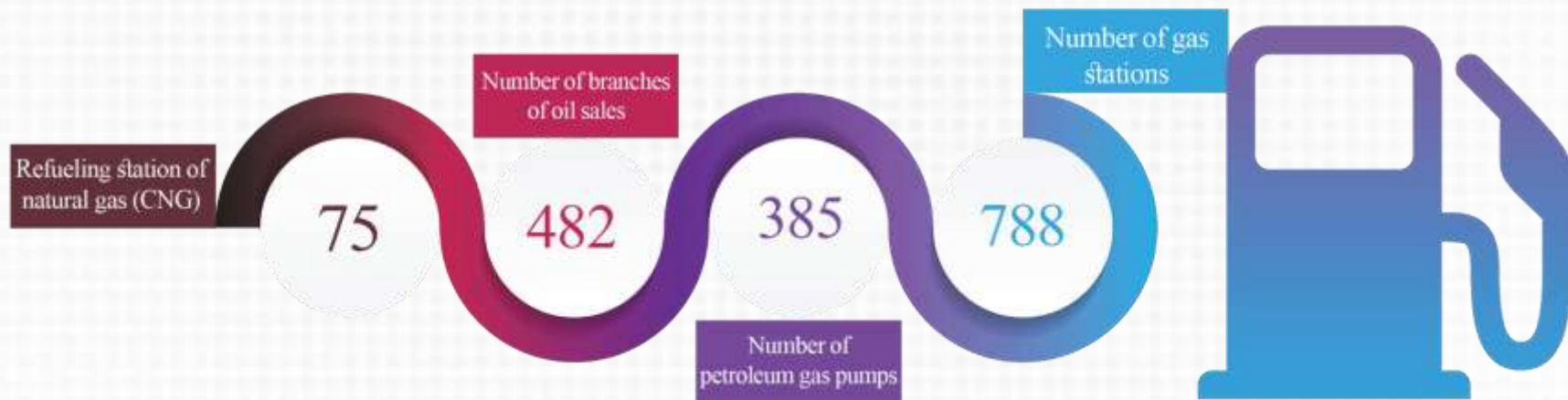
- Sand 6
- Decorative stone 9
- Carcass stone 10
- Ballast 1
- Gypsum 18
- Limestone 5



# Oil And Gas

[Return to Main Menu](#)





[Return to Main Menu](#)





# Building and Housing



[Return to Main Menu](#)

Industrial,  
educational and  
sanitary licenses

11



Issued  
commercial  
licenses

243



Residential and  
workshop  
licenses

216



*Residential  
licenses*

3151



The average price of one  
square meter of land on the  
residential buildings:  
**13725** thousand Rials

average price of one  
square meter substructure  
of residential units: **38126**  
thousand Rials

average monthly rental  
rent in contract concluded  
between the landlord and  
tenant, for per square  
meter substructure of  
residential unit: **90110** Rials

[Return to Main Menu](#)

768.2  
thousand  
square meters  
(land area)

*Building permits  
issued for  
construction:  
3625 items*

1677.1  
thousand square  
meters  
(foundation area  
of the floors)

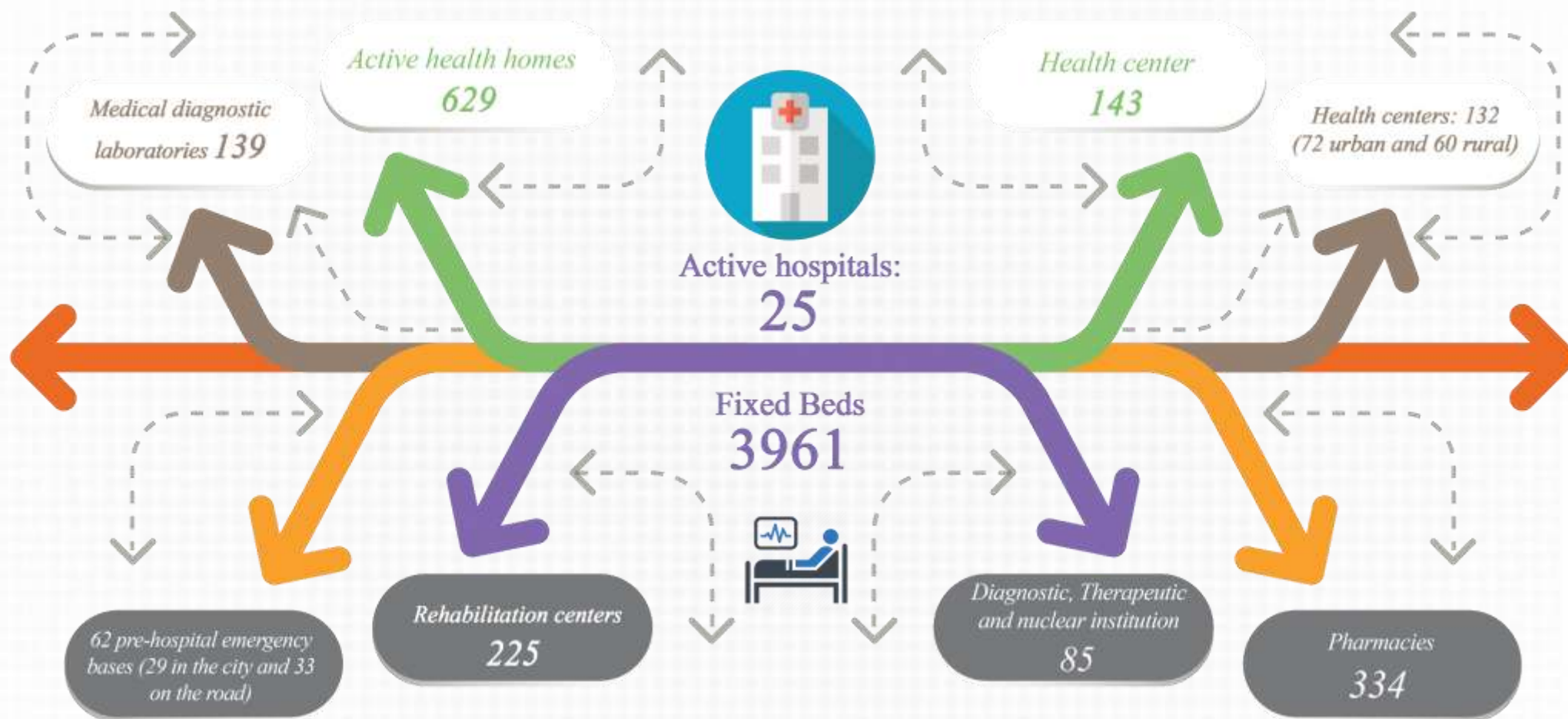






# Healthcare

[Return to Main Menu](#)



[Return to Main Menu](#)





	Veterinary pharmacy: 95
	Tentacle centers: 64
	Veterinary clinic: 83
	Hospital: 1
	Veterinary laboratories: 1



*The number of  
governmental veterinary  
staff*

**177**



*The number of  
nongovernmental  
veterinary staff*

**257**



[Return to Main Menu](#)





# Tourism And Crafts





The most **important attractions** of the province are:

Tagh-e-bustan, Bisotun, traditional market, Jame mosque, Gur dakhmeh, historical Hill of Ganj Dare, Darius Inscription, Shah Abbasi Carvanserai, Anahita Temple, Niloofar Sarab, Sahneh Sarab, Rijab River, Yazdgerd Castle, Abu Dhajaneh Tomb, Quri Qalah Cave, Ravansar Sarab, Rijab waterfall, Hajij village, shamshir village, Bazi Deraz Mount, Goor Dakhmeh Direh



[Return to Main Menu](#)



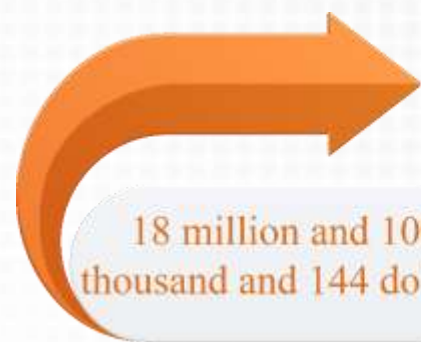




89000  
carpet  
weavers



**The most important handicraft products in Kermanshah province:** Carpets, rugs, traditional instruments, Jajim weaving, sculpture and metal tools, mosaic, woodworks, leather artifacts and local jewelry, metalworking, traditional sewing, Embossed flower rugs, pottery, traditional designing, basket waving, textile, glass cutting, traditional dyeing, carpet designing, illumination miniature, woodturning and ...



18 million and 109  
thousand and 144 dollars

*The province's  
handicraft exports  
in the year 2017*



[Return to Main Menu](#)







# Industrial Settlements

[Return to Main Menu](#)



*25 approved  
industrial settlements  
and industrial zones*

*The total  
amount of the land  
available to the  
industrial  
settlements and  
areas is more than  
2400  
hectares*

*About 5 Km  
from the  
center  
of the province  
or city*

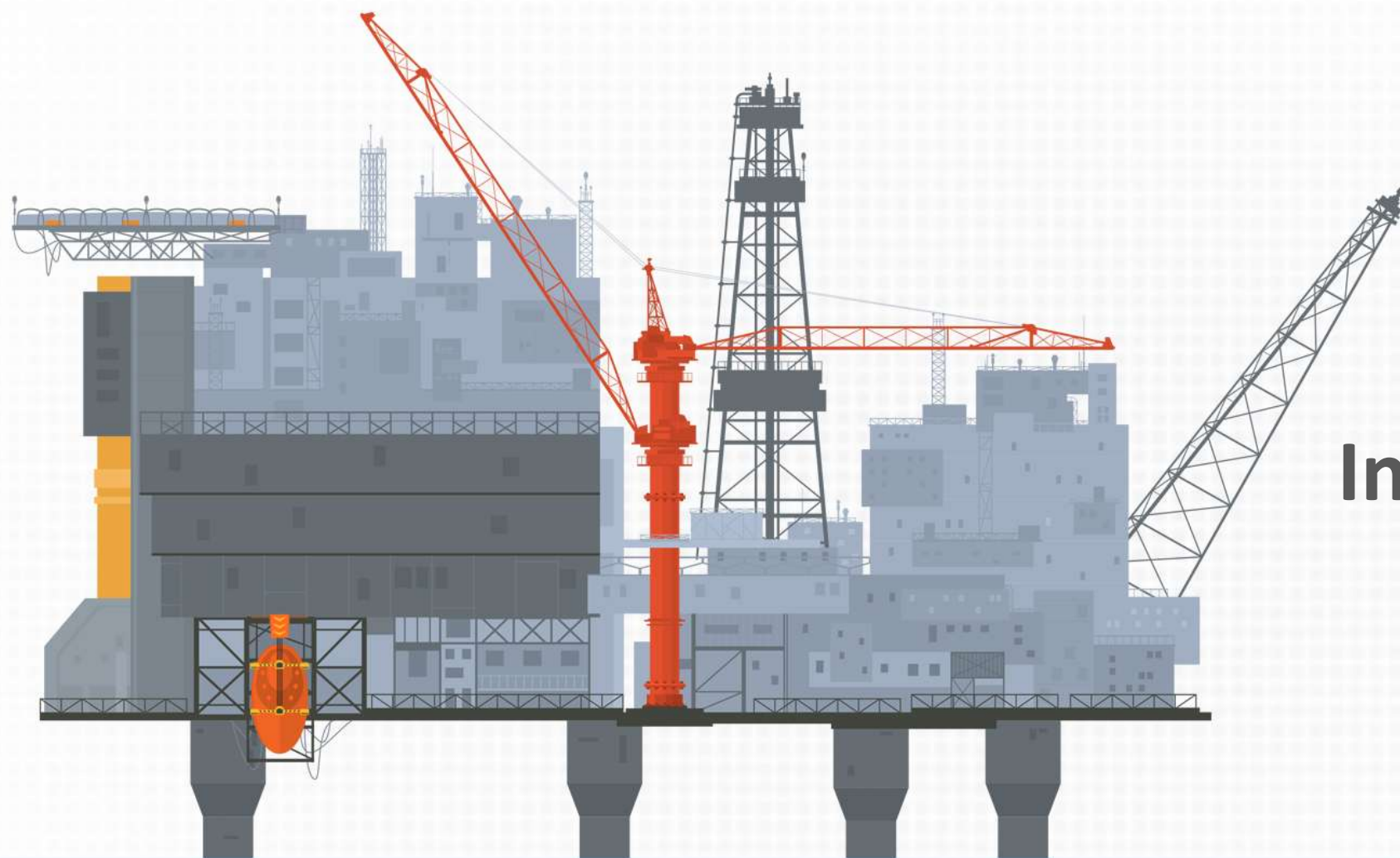
*It has infrastructure facilities  
such as: water, electricity  
telephone and gas, and is ready  
to accept investors in the  
geographical area of the  
province*



[Return to Main Menu](#)







# Infrastructures

[Return to Main Menu](#)



*Being on the  
road of  
Atabat-e-Aliat*



*493 km  
Main route*



*447 km  
Motorway*

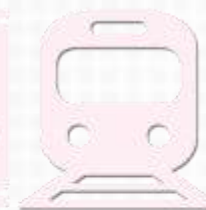


*2831 km  
the length of communica-  
tion routes*



The international airport of Shahid Ashrafi Esfahani, the Hub in the west of Iran and with a capacity of 120 weekly flights

The length of the main railway lines is **457.5 km** with **5** stations



Kermanshah refinery  
Bisotun powerhouse  
oil and gas reserves



HOTEL  
★★★★★ Hotel  
numbers  
**27**



Amount of net  
cargo transported  
**7200** tone



Number of  
passengers commuted  
**110218**

[Return to Main Menu](#)







# Industry

[Return to Main Menu](#)

Investment in industrial workshop  
with issued operating licenses

**13848 Billion Rials**



The most important industrial  
projects in the province:

150,000 barrel refinery plan,  
polypropylene production plan,  
petrochemical development plan  
with urea and ammonia fertilizer,  
iron melting, 2-piece aluminum  
can, bioethanol, corn oil, bone  
bio implant, calcium carbonate  
paper design



Due to the strategic situation and the  
cooperation with the **Iraq** state, this  
province has the best investment  
situation in producing industrial  
products and exports to Iraq and other  
countries



[Return to Main Menu](#)

**The most  
important  
industrial units  
production units  
of autos,  
cement, ceramic  
tiles, dairies,  
rebar and  
beam, Edible  
oils, printing,  
packaging and  
carton making  
industries, flour  
industries,  
canning and  
tomato paste**



**3 petrochemical units are in operation and production**

The fourth petrochemical plan, in special economic areas of  
Islamabad-e-Gharb, and the Kermanshah petrochemical  
development plan are in progress.





### Important units of manufacturing and industrial products

- ❖ 4 units for the production of multilayer plastic bags with the capacity of 40 thousand tons
- ❖ 12 unit of steel skeletons for the construction of 125,000 tons
- ❖ 1 unit of prefabricated building components and ... with a capacity of 1.5 million tons
- ❖ 3 liqueur processing units with a capacity of 5000 tons
- ❖ 1 unit of processing plants of medicinal plants with a capacity of 1200 tons
- ❖ 40 units of automotive parts production including: (3 units of plastic products – 26 units of metal parts – 2 units of automotive electronics – 4 units of automobile filters – 1 unit of battery production – 4 units of automobile)
- ❖ 1 unit of production of precision industrial parts (casting) with a capacity of 700 tons
- ❖ 1 production unit of municipal services machinery with a capacity of 3400 units
- ❖ 2 units for a production of the box with a capacity of 600 thousands units
- ❖ 1 unit of production of a car chassis with a capacity of 80 thousand units
- ❖ 7 livestock and poultry slaughterhouses with a capacity of 340 tons per day

[Return to Main Menu](#)

- ❖ 3 operating petrochemical plants, with production of one million tons per year (urea and ammonia- alkyl linear gasoline – heavy polyethylene) (production of heavy polyethylene: 300 thousand tons – production of linear gasoline 50 thousand tons- production of urea and ammonia fertilizer: 660 thousand tons)
- ❖ 1 unit of automobile production with a capacity of 50 thousand units in the first phase
- ❖ 2 units of cement production capacity of 3.6 million tons
- ❖ 3 ceramic tile production units with a capacity of 24.5 million tons
- ❖ 3 units for the production of rebar and beam with a capacity of 600 thousand tons
- ❖ 1 unit of production of Ferro-manganese with a capacity of 5 thousand tons
- ❖ 3 tomato paste production units with a capacity of 60 thousand tons
- ❖ 1 unit of vegetable oil production capacity of 300 thousand tons
- ❖ 2 sugar production units of sugar beet with a capacity of 120 thousand tons
- ❖ 16 units of dairy products with a capacity of 460 thousand tons
- ❖ 2 units for the production of a variety of drugs with a capacity of 340 million units of medicine and 200 thousand tons of drug raw materials
- ❖ 1 unit for the production of pesticides with a capacity of 3 thousand tons
- ❖ 16 units of flour production capacity of 600 thousand tons
- ❖ 19 units of livestock and poultry production with a capacity of one million tons
- ❖ 33 block units with a capacity of 650 thousand square meters
- ❖ 5 units for the production of gypsum construction with a capacity of 675 thousand tons
- ❖ 1 unit production of all types of fabric with a capacity of 10 million square meters
- ❖ 2 glassmaking units
- ❖ 1 double-layer canning enterprise with a capacity of 12,000 tons
- ❖ An iron ingot production enterprise with a capacity of 200,000 tons
- ❖ A crude corn oil production enterprise with a capacity of 182,000 tons
- ❖ Three machine-made carpet production enterprises with a capacity of 45,000 square meters.





*Major operational and  
under construction industrial  
designs*

- ❖ In the construction of two industrial designs for the production of 50,000 tons of Ferrocylsium
- ❖ In the course of the construction of two industrial designs for the production of light steel ingot 300 tons
- ❖ At the beginning of the construction of an industrial plan for the production of crude corn maize with a capacity of 182 thousand tons
- ❖ At the beginning of the construction of an industrial plan for industrial European production of bread in 9 thousand tons
- ❖ At the beginning of the construction of an industrial plan for the production of bone marrow bio membranes with a capacity of 300 thousand hands
- ❖ Establishment of a 150,000-barrel refinery to produce gasoline, diesel, etc., with a capacity of 3,000,000 tons
- ❖ Petrochemical establishment to produce propyl, methanol, and MTP with a capacity of 900,000 tons
- ❖ Kermanshah petrochemical development plan to produce urea and ammonia with a capacity of 1,000,000 tons
- ❖ Establishment of a petrochemical unit to produce ethylene glycol with a capacity of 6,000 tons
- ❖ Establishment of a petrochemical unit to produce methylamine with a capacity of 22,000,000 tons
- ❖ Establishment of a petrochemical unit to produce ethylene propylene diene monomer with a capacity of 50,000 tons
- ❖ Establishment of a petrochemical unit to produce formalin and hexamine with a capacity of 51,000 tons
- ❖ Establishment of an industrial unit for the production of packaging craft paper with a capacity of 90,000 tons

Return to Main Menu





# Trade And Commerce



[Return to Main Menu](#)



Neighboring Iraq, provides the fields of exchanging goods, services and tourists, and also, transferring technical knowledge for Kermanshah province

[Return to Main Menu](#)



### Types of export products:

Urea fertilizer, cement and clinker, dried fruits, food industry, steel, dairy products, fruits and vegetables, cellulose products, medicinal plants, handmade carpets, chickpeas, livestock, handicrafts, cosmetics products, ceramic tiles, steel, tomato paste, Glass, and dairy products and ...



### The most important export production units:

Bisetoun dairy products, Oraman-e-gharb, Gahan Folad-e-gharb, Bisetoun Iron and Steel Complex, Chini kurd, Kashi kurd, Kermanshah Zamzam, Kermanshah Petrochemical Industries, Gharb Cement Industries, Bisetoun Tile Industries, Rojin Tak, Kazeh Tile Industries, Complex of Cultivation and Vegetable Oil of Mahidasht, Saman-e-egharb cement industries, Manizan, Zagros Licorice,

Bisetoun Petrochemical, Poli Len, Kabl-e-ebakhtar, Development of printing and packaging industry in Kermanshah, Gharb Health Products, Gharb Fanarsazi, Sepid Meysam and ...







Especial economic  
zone  
Islamabad-e-gharb



Qasr Shirin  
Free Trade Zone



**Six border market**



**Five official borders**

Kermanshah  
Khosravi - Parvizkhan

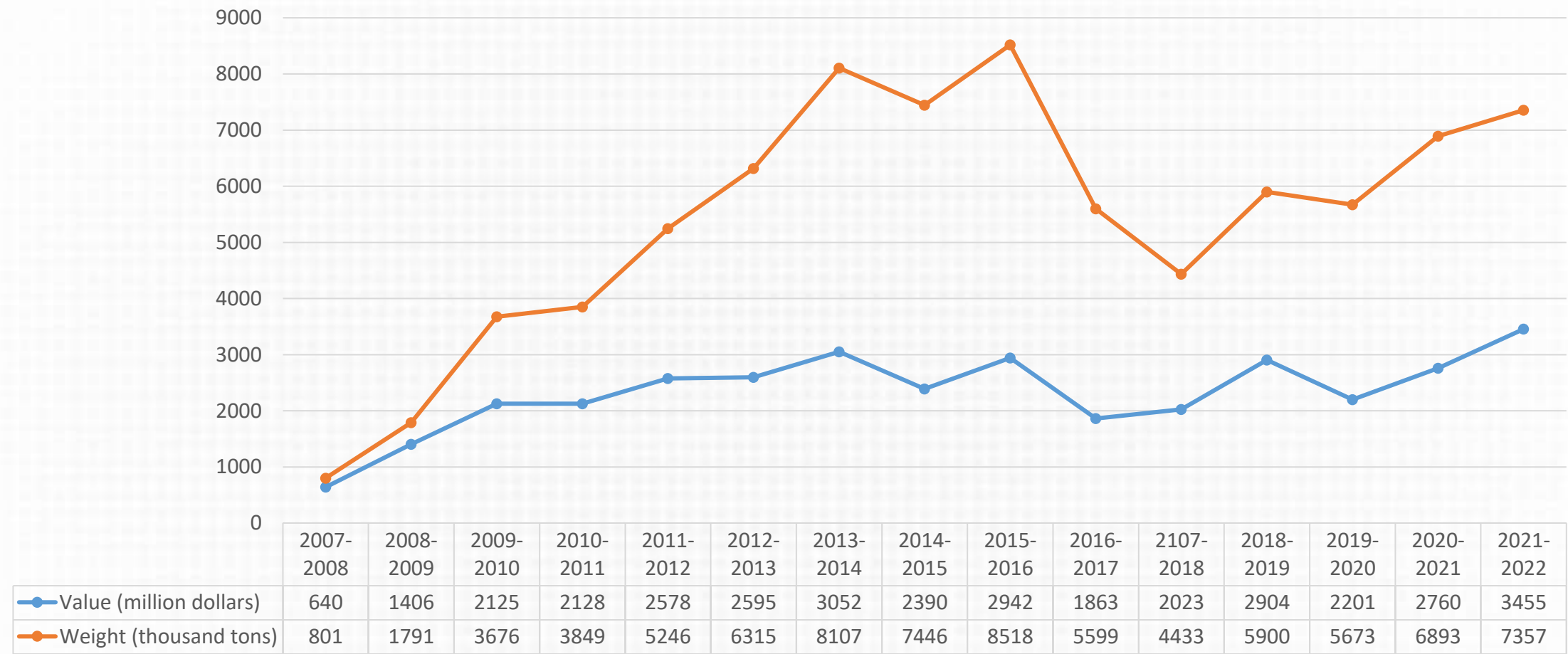


**3 official customs**

[Return to Main Menu](#)



Ten years performance of the Foreign Trade Department of the province during 2007 – 2022



[Return to Main Menu](#)







---

## Investment Opportunities

[Return to Main Menu](#)

## Investment Opportunities in Mine and Industry

Row	Title of the Project	Annual Capacity	Capital Estimation (Euro)	Place of the Project (County)
1	Converting Gas Into Polypropylene GTPP	265 Million Tons	1210	Sonqor
2	Solar Panel made up of Silicon Metal- Wiper and Solar Panel	3,000 Tons	477.9	Kermanshah
3	Melamine Crystal	3,000 Tons	48.9	Harsin
4	Seamless Pipes(Mannesmann)	300,000 Tons	224.4	Sarpol-e Zahab
5	Ferro-Alloys with the Priority of Ferrosilicon Manganese	50,000 Tons	35.5	Harsin
6	Magnesium Ingot	50,000 Tons	46.7	Eslamabad-e Gharb
7	Detergent Powder and Sulfuric Acid	102,000 Tons	20	Harsin
8	Modern Stonecutting	1,000,000 M <sup>2</sup>	12.3	Harsin
9	Flute Glass	180,000 Tons	62.2	Kangavar
10	Manganese Sulfate	10,000 Tons	5.1	Harsin
11	Autoclaved Cellular Reinforced Concrete Blocks and Panels	285,000 M <sup>3</sup>	16.8	Salas-e Babajani
12	Sugar Factory	4,000 Tons/Day	68.9	Kangavar
13	Sulfur Coated Urea Fertilizer	100,000 Tons	17.8	Harsin
14	Ferrosilicon	50,000 Tons	24.4	Ravansar
15	Polyethylene Pipe and Fittings	30,000 Tons	8.9	Sarpol-e Zahab
16	Gypsum Panels	1.5 Million M <sup>2</sup>	2.5	Qasr-e Shirin
17	CV Joint	300,000	14.4	Kermanshah
18	Producing Airbags	400,000	3.3	Sahneh



[Return to Main Menu](#)







## Investment opportunities in agriculture section

Item	Project title	Capacity	Project implementation site
1	Modern gardens' expansion	250,000 MT	Kermanshah Province – tropical regions lands
2	Integrated (dates and citrus) gardens expansion	50,000 MT	Kermanshah Province – tropical regions lands
3	Gardens expansion in steep lands	2,000 MT	Kermanshah Province – temperate and cold regions lands
4	Saffron culture expansion	16 MT	Kermanshah Province – – temperate and cold regions lands
5	Medicinal plants culture expansion	10,000 MT	Kermanshah Province – statewide
6	Greenhouse products culture expansion	300,000 MT	Kermanshah Province – tropical regions lands
7	Lentic farming project implementation in Azadi Dam downstream through private- public participation -	250 MT per year	Dalahoo County, Azadi Dam downstream
8	Lentic farming project implementation in Jamishan Dam downstream through private- public participation -	150 MT per year	Songhor County, Jamishan Dam downstream
9	Lentic farming project implementation in Zamkan Dam downstream through private- public participation -	100 MT per year	Dalahoo County, Zamkan Dam downstream
10	Sugar production from beetroot	1,170 MT	Kermanshah- Sarpol Zahab- Islamabad Gharb- Kangavar
11	Pea processing	10,000 MT	Kermanshah- Ravansar- Islamabad- Dalahoo
12	Tomato juice and paste	400,000 MT	Kermanshah- Doroud Faraman
13	Potato processing	15,000 MT	Kermanshah- Sarpol Zahab
14	Olive packing and processing	3,000 MT	Dalahoo
15	Saffron packing and processing	5 MT	Kermanshah
16	Malt and non-alcoholic beer production from barley	5,000 MT	Islamabad Gharb
17	Poultry line 2 slaughterhouse	4,000 pieces per hour	Kermanshah - Dalahoo
18	Livestock industrial slaughterhouse	4,000 pieces per hour	Kermanshah – Javanrood, Songhor
19	Dalahoo Vileh Bionij Livestock Town	14,400 heads	Kermanshah- Dalahoo- Vileh Bionij Village of Dalahoo
20	75,000-heads lamb fattening	75,000 heads	Kermanshah – Dalahoo- Solas- Islamabad Gharb- Songhor
21	Kurd race horse farming complex	300 heads of thoroughbred horses	Kermanshah
22	Lactating cows complex	2,000 heads	Kermanshah- Sahneh- Chenarshooh Village
23	10,000-head calf fattening	3,600 MT beef	Kermanshah- Kangavar- Ravansar- Songhor- Sahneh
24	10,000-head lactating cows	10,000 heads	Kermanshah- Sahneh- Islamabad Gharb- Harsin- Songhor
25	11,000-head productive light-weight livestock farming	11,000 MT milk- 20,000 heads of lamb	Kermanshah

[Return to Main Menu](#)



[Return to Main Menu](#)

## Investment opportunities in services section

Item	Project title	Capacity	Project implementation site
1	Solar power plant	10 Megawatt	Islamabad Gharb
2	Solar power plant	20 Megawatt	Kermanshah
3	Solar power plant	25 Megawatt	Kermanshah
4	Bisotoon Reservoir Dam and transmission system	40,000,000 m <sup>3</sup>	Kermanshah- Bisotoon
5	Drainage and irrigation main network and transmission system of Kabootar Laneh Dam	32.2 million m <sup>3</sup>	Kangavar
6	Gavshan Water Power Plant	11.02 Giga watt hour energy per year	Sanandaj- Kamyaran
7	Water transmission system from Azadi Dam to Islamabad Gharb City	17.1 million m <sup>3</sup>	Islamabad Gharb
8	Kermanshah- Khosravi Highway establishment	-	Between Kermanshah- Khosravi Highway
9	Ghazanchi- Ravansar- Paveh- Nosood- Sheikh Saleh Highway establishment	-	Kermanshah
10	Kermanshah intra-urban train station complexes	-	Kermanshah
11	Kermanshah Water Park	120,000 persons per year	Kermanshah
12	Sarab Ghanbar Tourist – Creational Complex	-	Kermanshah
13	Taghbostan Telecabin Tourist – Creational Complex	-	Kermanshah
14	Shirin Hotel	200,000 persons per year	Kermanshah
15	Pol Velayat Game City	-	Kermanshah
16	Western Iran International Trade Center	-	Kermanshah
17	City's Great Hall and Art and Culture International Center	-	Kermanshah





